



ward, corner 11th Ave.

MAP OF HOUSTON HEIGHTS



Residence on Boulevard, between 15th and 16th Aves.



Cottage, Corner 16th Ave. and Rutland Street



Residence on Boulevard, between 13th and 14th Aves



Residence on 20th Ave., between Rutland and Yale Sts.



Houston Heights Water and Electric Light Plant



Roberts Cotton Oil Company, Ashland St. and 25th Ave.



Consumers Cotton Oil Co., 9th Ave. and Rutland St.



Oriental Textile Mills, 22d Ave. and Lawrence St.



Woodworking Plant, Railroad St. and 24th Ave.



Residence on 20th Ave., between Rutland and Yale Sts.



Woodworking Plant, Railroad St. and 24th Ave.



Residence on Boulevard and 18th Ave.



Grain and Feed Mill, Railroad St. and 22d Ave.



High School Building, corner 12th Ave. and Yale St.



Residence, corner Boulevard and 19th Ave.



A Residence in Houston Heights

21	22	23	24	25	26	27
28	29	30	31	32	33	34
35	36	37	38	39	40	41
42	43	44	45	46	47	48
49	50	51	52	53	54	55
56	57	58	59	60	61	62
63	64	65	66	67	68	69
70	71	72	73	74	75	76
77	78	79	80	81	82	83
84	85	86	87	88	89	90
91	92	93	94	95	96	97
98	99	100	101	102	103	104
105	106	107	108	109	110	111
112	113	114	115	116	117	118
119	120	121	122	123	124	125
126	127	128	129	130	131	132
133	134	135	136	137	138	139
140	141	142	143	144	145	146
147	148	149	150	151	152	153
154	155	156	157	158	159	160
161	162	163	164	165	166	167
168	169	170	171	172	173	174
175	176	177	178	179	180	181
182	183	184	185	186	187	188
189	190	191	192	193	194	195
196	197	198	199	200	201	202
203	204	205	206	207	208	209
210	211	212	213	214	215	216
217	218	219	220	221	222	223
224	225	226	227	228	229	230
231	232	233	234	235	236	237
238	239	240	241	242	243	244
245	246	247	248	249	250	251
252	253	254	255	256	257	258
259	260	261	262	263	264	265
266	267	268	269	270	271	272
273	274	275	276	277	278	279
280	281	282	283	284	285	286
287	288	289	290	291	292	293
294	295	296	297	298	299	300
301	302	303	304	305	306	307
308	309	310	311	312	313	314
315	316	317	318	319	320	321
322	323	324	325	326	327	328
329	330	331	332	333	334	335
336	337	338	339	340	341	342
343	344	345	346	347	348	349
350	351	352	353	354	355	356
357	358	359	360	361	362	363
364	365	366	367	368	369	370
371	372	373	374	375	376	377
378	379	380	381	382	383	384
385	386	387	388	389	390	391
392	393	394	395	396	397	398
399	400	401	402	403	404	405
406	407	408	409	410	411	412
413	414	415	416	417	418	419
420	421	422	423	424	425	426
427	428	429	430	431	432	433
434	435	436	437	438	439	440
441	442	443	444	445	446	447
448	449	450	451	452	453	454
455	456	457	458	459	460	461
462	463	464	465	466	467	468
469	470	471	472	473	474	475
476	477	478	479	480	481	482
483	484	485	486	487	488	489
490	491	492	493	494	495	496
497	498	499	500	501	502	503
504	505	506	507	508	509	510
511	512	513	514	515	516	517
518	519	520	521	522	523	524
525	526	527	528	529	530	531
532	533	534	535	536	537	538
539	540	541	542	543	544	545
546	547	548	549	550	551	552
553	554	555	556	557	558	559
560	561	562	563	564	565	566
567	568	569	570	571	572	573
574	575	576	577	578	579	580
581	582	583	584	585	586	587
588	589	590	591	592	593	594
595	596	597	598	599	600	601
602	603	604	605	606	607	608
609	610	611	612	613	614	615
616	617	618	619	620	621	622
623	624	625	626	627	628	629
630	631	632	633	634	635	636
637	638	639	640	641	642	643
644	645	646	647	648	649	650
651	652	653	654	655	656	657
658	659	660	661	662	663	664
665	666	667	668	669	670	671
672	673	674	675	676	677	678
679	680	681	682	683	684	685
686	687	688	689	690	691	692
693	694	695	696	697	698	699
700	701	702	703	704	705	706
707	708	709	710	711	712	713
714	715	716	717	718	719	720
721	722	723	724	725	726	727
728	729	730	731	732	733	734
735	736	737	738	739	740	741
742	743	744	745	746	747	748
749	750	751	752	753	754	755
756	757	758	759	760	761	762
763	764	765	766	767	768	769
770	771	772	773	774	775	776
777	778	779	780	781	782	783
784	785	786	787	788	789	790
791	792	793	794	795	796	797
798	799	800	801	802	803	804
805	806	807	808	809	810	811
812	813	814	815	816	817	818
819	820	821	822	823	824	825
826	827	828	829	830	831	832
833	834	835	836	837	838	839
840	841	842	843	844	845	846
847	848	849	850	851	852	853
854	855	856	857	858	859	860
861	862	863	864	865	866	867
868	869	870	871	872	873	874
875	876	877	878	879	880	881
882	883	884	885	886	887	888
889	890	891	892	893	894	895
896	897	898	899	900	901	902
903	904	905	906	907	908	909
910	911	912	913	914	915	916
917	918	919	920	921	922	923
924	925	926	927	928	929	930
931	932	933	934	935	936	937
938	939	940	941	942	943	944
945	946	947	948	949	950	951
952	953	954	955	956	957	958
959	960	961	962	963	964	965
966	967	968	969	970	971	972
973	974	975	976	977	978	979
980	981	982	983	984	985	986
987	988	989	990	991	992	993
994	995	996	997	998	999	1000



Residence on



Houston Heights Boulevard

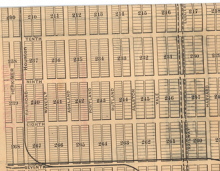


Residence, corner 18th Ave. and Harvard Street

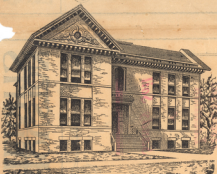




Residence, corner 18th Ave. and Harvard Street



First M. E. Church, Harvard Street near 10th Ave.



Houston Heights Hotel



HOUSTON
HEIGHTS

LOTS

AT REASONABLE
PRICES

ON EASY TERMS

— AT —
Houston Heights
Office

200 COMMERCE AVE.
HOUSTON, TEXAS

HOUSTON
HEIGHTS

HOUSTON
HEIGHTS

Pure
Artesian
Water
furnished any
where in
Houston Heights
upon application

HOUSTON
HEIGHTS

6150
3350
4213
4213
3203
4413
532
24482
765.00

MAP

Houston

Heights

OFFICE
200 COMMERCE AVENUE
HOUSTON, TEXAS

HOUSTON
HEIGHTS

Good
Street Car
Service
with large
Double Truck
Cars

HOUSTON
HEIGHTS

HOUSTON
HEIGHTS

Nominal
Taxes

HOUSTON
HEIGHTS

HOUSTON
HEIGHTS

Excellent
Schools
and many
Churches

HOUSTON
HEIGHTS

HOUSTON
HEIGHTS

Miles
of
Cement
Sidewalks

HOUSTON
HEIGHTS

HOUSTON
HEIGHTS

Electricity
for Lights
and Power
available in
all portions
of Heights

HOUSTON
HEIGHTS

HOUSTON
HEIGHTS

Natural
Drainage

HOUSTON
HEIGHTS

HOUSTON
HEIGHTS

Healthful
Location
Sandy Soil

HOUSTON
HEIGHTS

HOUSTON
HEIGHTS

City
Advantages
with
Suburban
Comforts

HOUSTON
HEIGHTS

HOUSTON
HEIGHTS

Graded
Streets

HOUSTON
HEIGHTS