

1 Kereru Bend,
Tawa.

1-3-93.

Dear Beryl,

From some forgotten source I've "inherited" this paper, but it's quite decent. . . . What a marvellous surprise to open your package of "Scots Magazine". I've read a good deal of them, and keep going back to read where I've only noted the title, or seen references in one number to something overlooked in another. I see an occasional item from N.Z., for of course there are plenty of Scots in N.Z. . . . I've been prompted to look at my bookshelves to see how well Scotland was represented. It's not bad: all of the Waverley Novels, lots of Stevenson, several of Burns, Byron, and then less known figures like Lady Nairn, Andrew Lang, Wm. Ayton (poet), Hugh Miller (antiquary), William Roughhead (historian) McPherson (ancient ballads). Then I have a few records of Scots songs, including a favourite of mine, Kenneth McKellar - about 100 songs!

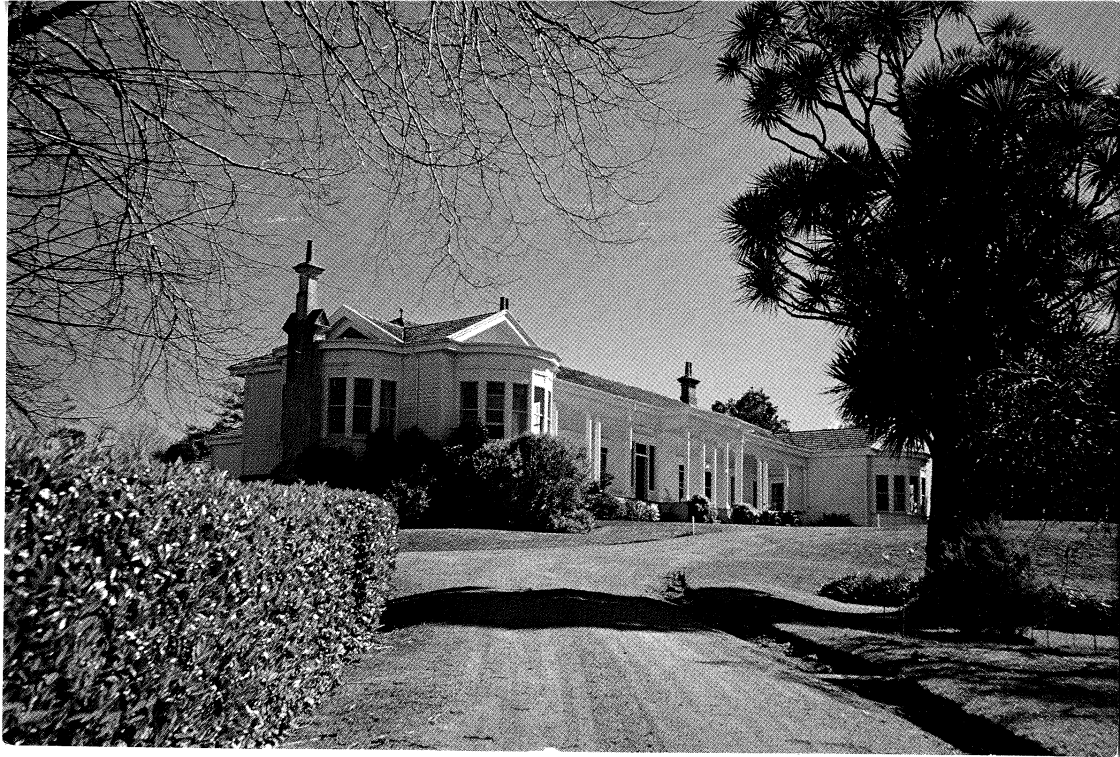
We are enjoying a flush of garden produce - lots of runner beans, carrots, cabbage, Brussels sprouts, and corn nearly ready, and leeks coming along fairly well. Parsnips very promising. It's been a poor year for fruit, apples very

poor, plums nil ("plum bladder") even Damson which are usually prolific. Tomatoes just starting to be usable.

We did a short trip away recently; a couple of days at Bushy Park (owned by Forest & Bird Society of which we are members) then across to Napier to spend a day or two with Bas, who seems to be coping fairly well. I keep in fairly regular contact by letter, and he writes just as often, with more to talk about, lately, of course, about his busy trip to Rotorua, Auckland and New Plymouth.

We're particularly interested these days, in the movements of Mark and Christopher and Angela in London. They are getting about extremely well, in Britain and the Continent. Mark had gone via Japan and Bangkok, and then, because when he was with IBM he'd known a chap from Stockholm, he spent a few days there too. They keep us well informed, but assure us they want NZ gossip too, so we write with our modest news.

Love to June as to yourself,
From Greg & Clyde.



BUSHY PARK RESERVE, KAI IWI, WANGANUI.

This homestead, built at the turn of the century, stands in spacious gardens amid 81 hectares of native bush, administered by the Royal Forest and Bird Protection Society. Overnight accommodation is available.

POSTCARD





LOGAN PRINT, GISBORNE, NEW ZEALAND. P/978/1/84